



BUCKS COUNTY RACQUET CLUB

Owned & Managed by the Agnello Family Since 1970

2011 WINTER LEAGUES

Fall 2010 league players have first choice to re-sign by December 31, 2010

After this date all openings are on a first-come basis.

If the league is full, let us put your name on our sub or waiting list!

Women's Fall Travel Leagues

BCRC hosts "A" & "B" Level Buxmont travel teams. Buxmont is an interclub league in which other tennis facilities compete against each other. The "B" League (3.0-4.0) plays Mondays. The "A" league (3.5-5.0) plays Fridays. If you're interested in playing or subbing for one of these teams, leave your name at the front desk and we will forward it onto the appropriate team captain.

Babysitting



BCRC offers a free, year 'round nursery service. Hours of operation are Monday through Friday, 9am to 3pm. Children must be between the ages of 12 months and 7 years of age. Our beautiful nursery is equipped with toys, TV, videos, and educational books. Weather permitting, children will occasionally be taken outside to play on our 13 acres of scenic farm-land.

MEN & WOMEN ADULT LEAGUES

Monday:

4.0 Men's Singles, 9:00-10:30pm, 13 weeks Jan. 24 - April 25

Tuesday:

3.5 Men's Singles, 9:00-10:30pm, 14 weeks Jan. 18 - April 19

Wednesday:

3.5 Women's "B" Level, 1:30-3pm, 13 weeks Jan. 26 - April 20

3.5 Men's Singles, 9:00-10:30pm, 14 weeks Jan. 19 - April 20

Thursday:

4.0 Men's Singles, 9:00-10:30pm, 14 weeks Jan. 20 - April 21

LADIES ROUND ROBIN LEAGUE - (with roaming teaching pro)

Tuesday: 2.5/3.0 Doubles, 1:30-3pm, 12 weeks

(Sign up week to week for this league. Contact Shana Morris at front desk.)

Friday: 2.5/3.0 Doubles, 1:30-3:00pm, 13 weeks Jan. 26 - April 20

SATURDAY JUNIOR LEAGUES

USTA Jr. Travel League - *(See Todd Dlugosz, front desk for sign up & pricing)*

MIXED DOUBLES FRIDAY NIGHT LEAGUE - 7:30-9pm

Sign up week to week, contact Linda Raftery at front desk for details.

League Prices

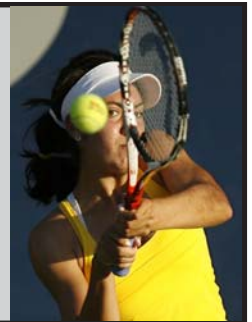
All leagues are pre-paid. Balls Provided by Club.

Full payment due first day of play

Singles: \$18/per session ■ Doubles: \$15/per session

—————
To register, call

Melanie Hoover / League Coordinator - 215-493-5666.



**P.O. Box 515, 1150 Lord Sterling Road, Washington Cr., PA
215-493-5666 ■ www.BucksCountyRacquetClub.com**